



WCP2023

19TH WORLD CONGRESS OF BASIC AND CLINICAL PHARMACOLOGY

2 - 7 JULY 2023 | GLASGOW, SCOTLAND

WCP2023 Preferred venue list for satellite meetings

Crowne Plaza Hotel Glasgow (Hotel - 4 star)



The Crowne Plaza Glasgow is a refined business hotel with conference space for 2 – 800 attendees. The hotel is next door to the Scottish Event Campus (SEC) and the SSE Hydro and is a striking glass tower on the banks of the River Clyde. The flexible meeting spaces range from private board rooms to event suites. The Castle Suite is perfect for mid-scale events and can hold up to 300 delegates theatre style and can be split into three sections for lower numbers. The Island Suite can hold up to 280 delegates and split into three sections.

Distance from the SEC, Glasgow: 0.4 miles (10 mins walking)

MEETING ROOM CAPACITIES

Meeting Room	Board Room	Theatre Style	Cabaret
Castle Suite (1,2,3)	N/A	300	192
- Castle 1	35	100	70
- Castle 2	30	80	40
- Castle 3	30	80	40
Island Suite (1,2,3)	66	280	144
- 2 x Island Suites	40	110	64
- 1 x Island Suite	24	55	32

CONTACT DETAILS

Congress Road, North West, Glasgow, G3 8QT

T: +44 (0) 141 306 9933

E: info@cpglasgow.valoreurope.com

www.ihg.com/crowneplaza/hotels/gb/en/glasgow/glwcr/hoteldetail/events-facilities

Radisson Red Hotel Glasgow (Hotel - 4 star)



The Radisson RED Hotel Glasgow combines urban style, modern comforts, and a love for the arts. The hotel is located on the Scottish Event Campus (SEC) where the WCP2023 is taking place. The hotel has meeting space for up to 100 attendees and offers cutting edge technology and views across the city.

Distance from the SEC, Glasgow: 0.6 miles (10 mins walking)

MEETING ROOM CAPACITIES

Meeting Room	Board Room	Theatre Style	Cabaret
Studio 1	21	56	30
Studio 2	12	32	12
Studio 3	36	100	48
Studio 4	15	30	N/A

CONTACT DETAILS

Finnieston Quay, 25 Tunnel Street, Glasgow, G3 8HL
 T: +44 (0) 141 471 1700
 E: reservations.glasgow@radissonred.com
www.radissonhotels.com/en-us/hotels/radisson-red-glasgow

**Kimpton Blythswood Square Hotel
(Hotel - 5 star)**



Once home to wealthy merchants, the site later became headquarter for the Royal Scottish Automobile Club. After a multimillion-pound restoration, it is now a 21st century hotel. Located in the City centre of Glasgow, the meeting spaces include the Monte Carlo Suite which can occupy up to 100 attendees or split into smaller rooms. Additionally, there is a 40-seater screening room, furnished in Harris Tweed fabric that can be utilised for presentations.

Distance from the SEC, Glasgow: 1.8 miles

MEETING ROOM CAPACITIES

The Monte Carlo Suite is perfect for your satellite meeting and can take up to 100 attendees or split into smaller rooms. Additionally, there is a 40-seater screening room, decked out in Harris Tweed fabric that is great for slide show presentations.

Meeting Room	Board Room	Theatre Style	Cabaret
Monte Carlo Suite (1,2,3)	50	100	56
-Monte Carlo 1	20	40	24
-Monte Carlo 2	14	20	16
-Monte Carlo 3	14	20	16
Screening Room	N/A	40	N/A

CONTACT DETAILS

11 Blythswood Square, Glasgow, G2 4AD
 T: +44 (0) 141 248 8888
 E: conference@kimptonblythswoodsquare.com
www.kimptonblythswoodsquare.com



WCP2023

19TH WORLD CONGRESS OF BASIC AND CLINICAL PHARMACOLOGY

2 - 7 JULY 2023 | GLASGOW, SCOTLAND

University of Glasgow (Academic venue)



Kelvin Gallery located in the Hunterian Museum



Senate Room located in the main building of the University

The University of Glasgow is one of Scotland's most famous and prestigious landmarks. It was founded in 1451 and is the fourth-oldest university in the UK. We have recommended two mid-size venues within the University of Glasgow for satellite meetings offering a mix of traditional and award-winning modern architecture.

Distance from the SEC, Glasgow: 2.0 miles

MEETING ROOM CAPACITIES

Meeting Room	Board Room	Theatre Style	Cabaret
Kelvin Gallery	N/A	200	100
Senate Room	40	120	60

CONTACT DETAILS

Glasgow, G12 8QQ

T: +44 (0) 141 330 2000

www.gla.ac.uk/events/conferencesandevents/conferenceevents/venues/

Please make your enquiry through the website above.



WCP2023

19TH WORLD CONGRESS OF BASIC AND CLINICAL PHARMACOLOGY

2 - 7 JULY 2023 | GLASGOW, SCOTLAND

Technology and Innovation Centre (TIC), University of Strathclyde (Academic venue)



This award-winning academic venue offers a range of flexible, contemporary, state of the art meeting space. Located in the heart of the city, the flagship venue is Strathclyde's world-class research facility, which is transforming collaboration between academia, industry, and the public sector.

Distance from the SEC, Glasgow: 3.5 miles

MEETING ROOM CAPACITIES

Meeting Room	Board Room	Theatre Style	Cabaret
Level 1 Auditorium	N/A	150	N/A
Main Auditorium	N/A	450	N/A
Conference Room 1	20	40	24
Conference Room 2	24	50	24
Conference Room 3	24	50	24
Conference Room 4 & 5	28	70	30
Conference Room 6 & 7	32	80	40
Conference Room 8	20	32	16

CONTACT DETAILS

99 George Street, Glasgow, G1 1RD
T: +44 (0) 141 553 4148
E: conferenceglasgow@strath.ac.uk
www.strath.ac.uk/conferencingandevents/

**House for an Art Lover
(Unusual venue)**



Acclaimed as a truly remarkable building, House for an Art Lover, designed by Charles Rennie Mackintosh, can be found hidden in the heart of Glasgow's Bellahouston Park. It is located within proximity of the M8 motorway and only 15 minutes' drive from the airport and the city centre. This unique venue is ideally suited for meetings up to 80 attendees.

Distance from the SEC, Glasgow: 4.1 miles

MEETING ROOM CAPACITIES

Meeting Room	Boardroom	Theatre	Cabaret
Main Hall	30	80 / 100	N/A
Music Room	45	80 / 120	49
Dining Room	20	50	N/A

CONTACT DETAILS

10 Dumbreck Road, Bellahouston Park, Glasgow, G41 5BW

T: +44 (0) 141 353 4770

E: info@houseforanartlover.co.uk

www.houseforanartlover.co.uk



WCP2023

19TH WORLD CONGRESS OF BASIC AND CLINICAL PHARMACOLOGY

2 - 7 JULY 2023 | GLASGOW, SCOTLAND

1599 at the Royal College of Physicians (Unusual venue)



1599 at The Royal College of Physicians & Surgeons of Glasgow house a collection of unique meeting rooms ideal for a satellite meeting. It is the only multidisciplinary College in the UK with 13,000 members including physicians, surgeons, dental professionals, travel medicine practitioners and podiatrists. It is located in the city centre of Glasgow and offers flexible meeting space to suit up to 140 attendees.

Distance from the SEC, Glasgow: 1.6 miles

MEETING ROOM CAPACITIES

Meeting Room	Boardroom	Theatre	Cabaret
Peter Lowe Lecture Theatre	N/A	70	N/A
Maurice Bloch Lecture Theatre	N/A	144	N/A
The College Hall	40	100	96
The Lower Library	26	60	32
The Princess Alexandra Room	30	60	48

CONTACT DETAILS

232-242 St Vincent Street, Glasgow, G2 5RJ
T: +44 (0) 845 388 1599
E: bookings@1599.co.uk
www.1599.co.uk

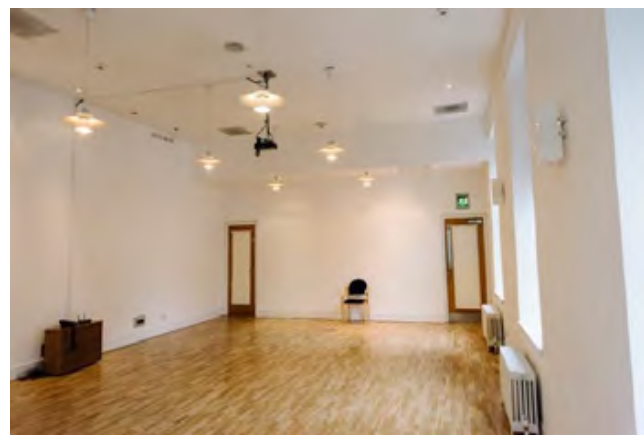


WCP2023

19TH WORLD CONGRESS OF BASIC AND CLINICAL PHARMACOLOGY

2 - 7 JULY 2023 | GLASGOW, SCOTLAND

Centre for Contemporary Arts, CCA (Unusual venue)



The Centre for Contemporary Arts (CCA) is Glasgow's hub for creativity. The building is steeped in history and the organisation has played a key role in the cultural life of the city for decades. The range of spaces are equipped with state-of-the-art technology including an intimate 74-seater cinema, theatre space for 158 attendees, dedicated private meeting and conference rooms, located in the heart of Glasgow city centre.

Distance from the SEC, Glasgow: 1.6 miles

MEETING ROOM CAPACITIES

Meeting Room	Board Room	Theatre Style	Cabaret
Cinema	N/A	74	N/A
Theatre	50	158	80
Clubroom	20	60	30

CONTACT DETAILS

350 Sauchiehall Street, Glasgow, G2 3JD
T: +44 (0) 141 352 4900
E: eventhire@cca-glasgow.com
www.cca-glasgow.com



WCP2023

19TH WORLD CONGRESS OF BASIC AND CLINICAL PHARMACOLOGY

2 - 7 JULY 2023 | GLASGOW, SCOTLAND

Mackintosh at the Willow (Unusual venue)



The original Willow Team Rooms Building was designed by Charles Rennie Mackintosh in 1903. The venue re-opened to the public in 2018 after an extensive restoration to the specifications of Charles Rennie Mackintosh himself and remains one of the most complex examples of his work still standing. The meeting spaces enjoy state-of-the-art AV facilities and natural day light.

Distance from the SEC, Glasgow: 1.7 miles

MEETING ROOM CAPACITIES

Meeting Room	Board Room	Theatre Style	Cabaret
Billiard Room	22	60	26
The AV Theatre	22	40	19
The Boardroom	16	30	N/A

CONTACT DETAILS

217 Sauchiehall Street, Glasgow, G2 3EX

T: +44 (0) 141 204 1903

E: booking@mackintoshatthewillow.com

www.mackintoshatthewillow.com



WCP2023

19TH WORLD CONGRESS OF BASIC AND CLINICAL PHARMACOLOGY

2 - 7 JULY 2023 | GLASGOW, SCOTLAND

Edinburgh International Conference Centre (EICC) (Conference Centre)



The EICC is an innovative and versatile venue for conferences and events of all sizes. The facilities include a series of adaptable auditoria, spacious reception areas and suites, all of which are complemented with world-leading technology and extensive branding opportunities. The EICC is ideally located for international and UK transport links and is within a short walk of the city's many excellent hotels and attractions, including the world-renowned Edinburgh Castle. Edinburgh's two major railway stations, Waverley, and Haymarket, are serviced by a frequent rail network, including the regular 1-hour service between Edinburgh and Glasgow.

MEETING ROOM CAPACITIES

Meeting Room	Board Room	Theatre Style	Cabaret
Pentland Suite	N/A	1,200	N/A
Pentland Auditoria	N/A	600	N/A
Sidlaw Auditoria	N/A	300	N/A
Fintry Auditoria	N/A	300	N/A
Harris Suite	36	100	48
Carrick Suite	36	100	48
Ochil Suite	36	100	48
Tinto	40	200	80
Moorfoot	40	200	80
Kilsyth	40	200	80
Cromdale Hall	N/A	1,000	640
Lennox Suite	N/A	2,000	1,000
Lammermuir	60	220	114
Moffat	20	55	24
Lowther	40	136	66
Meneith	36	115	58
Organisers Office	24	N/A	N/A

CONTACT DETAILS

Morag Truffelli
The Exchange, Edinburgh, EH3 8EE T: +44 (0) 131 519 4095
E: moragt@eicc.co.uk www.eicc.co.uk



WCP2023

19TH WORLD CONGRESS OF BASIC AND CLINICAL PHARMACOLOGY

2 - 7 JULY 2023 | GLASGOW, SCOTLAND

University of Edinburgh (Academic)



As part of the University of Edinburgh, Edinburgh First can cater to gatherings of all sizes, from a 1,000-strong audience to fine dining for 30. As well as high-specification conference facilities and business meeting rooms, Edinburgh First's venues at Pollock Halls look onto Arthur's Seat, whilst their centrally located venues offer windows onto some of Edinburgh's most spectacular views.

Edinburgh is located approx. 48miles from Glasgow and is serviced by frequent train links (50mins travel time) from Edinburgh to Glasgow city centres.

MEETING ROOM CAPACITIES

Venue	Capacity	Breakout rooms
John McIntyre Conference Centre	330	6
St Leonard's Hall	60	8
McEwan Hall	1000	4
50 George Square	275	7
Salisbury Green	36	3
Abden House	50	2
Appleton Tower	300	3
Gordon Aikman Lecture Theatre	473	N/A
Old College	250	4
Playfair Library Hall	250	N/A
Reid Concert Hall	220	N/A
St Cecilia's Hall	200	1

CONTACT DETAILS

UOE Accommodation Ltd trading as Edinburgh First, 9-16 Chambers Street, Edinburgh EH1 1HT

T: +44(0)131 651 2189

E: edinburgh.first@ed.ac.uk

<https://www.edinburghfirst.co.uk/venues/>



WCP2023

19TH WORLD CONGRESS OF BASIC AND CLINICAL PHARMACOLOGY

2 - 7 JULY 2023 | GLASGOW, SCOTLAND

The Sheraton (5-star Hotel)



The Sheraton Grand Hotel and Spa is located in the heart of the city and boasts a dedicated meeting and events space, complete with its own private entrance from the hotel forecourt. With 14 flexible meeting rooms, the conference & banqueting area is the largest of its kind in an Edinburgh hotel, with innovative design and meeting rooms layout.

Distance from the SEC, Glasgow: 48miles. Edinburgh is serviced by frequent train links (50mins travel time) from Edinburgh to Glasgow city centres.

MEETING ROOM CAPACITIES

Meeting Room	Board Room	Theatre Style	Cabaret
Edinburgh Suite	120	500	384
Edinburgh 1&2	80	240	184
Melville	28	90	48
Eilean Donan	20	N/A	N/A
Dunvegan	20	42	24
Culzean	22	56	32
Culzean 1&2	12	24	16
Glamis	22	56	32
Glamis 1 & 2	12	24	16
Braemar	22	40	24
Braemar 1 & 2	12	21	8

CONTACT DETAILS

Sheraton Grand Hotel & Spa, 1 Festival Square, Edinburgh, EH3 9SR

T: +44(0)131 229 9131

E: grandedinburgh@sheraton.com

<https://www.sheratonedinburgh.co.uk>

The Balmoral (5-star Hotel)



Located at No. 1 Princes Street, the Balmoral enjoys excellent access to Edinburgh's main transport hubs, including Waverley Station (located adjacent to the hotel) and the international airport. The Balmoral boasts 10 well-equipped events spaces in Edinburgh which can accommodate 15 to 450 guests with almost all rooms showcasing views looking out towards Edinburgh Castle and the Old Town.

Edinburgh is located approx. 48 miles from Glasgow and is serviced by frequent train links (50mins travel time) from Edinburgh to Glasgow city centres.

MEETING ROOM CAPACITIES

Meeting Room	Board Room	Theatre Style	Cabaret
Sir Walter Scott Suite	60	250 (BP) / 350 (FP)	120 (BP) / 150 (FP)
Holyrood Suite	40	110	72
Princes Suite	25	70	40
Waverley Suite	30	60	32
Annan Suite	22	50	32
Beaully Suite	30	70	40
Carron Suite	18	40	24
Don Suite	18	40	24
Esk Suite	30	70	40
Forth Suite	22	50	32

CONTACT DETAILS

1 Princes Street, Edinburgh EH2 2EQ

T: +44(0)131 556 2414

Meetings enquiries: <https://www.roccofortehotels.com/contact/meetings/BAL/>

<https://www.roccofortehotels.com/hotels-and-resorts/the-balmoral-hotel/>